

Studio Facts

Version 2024/04



VIDEO

| | |
|--|---|
| Vision Mixer Control Panel Multiviewer | ATEM Constellation 8k 4 M/E ATEM 2 M/E Broadcast Panel 2x 46" Iiyama Public Display 4k (Technical Director) 1x 21.5" Lilliput PVM210 (Audio) |
| Crosspoint | Blackmagic Design VideoHub 40 x 40 4k |
| Recording | Atomos Shogun Studio 2 8x HDSDI or 2x 4k on SSD |
| Camera Control | BirdDog CamControl (Laptop) BirdDog PTZ Keyboard |
| Reference | Lilliput Q15 |
| Scopes | Blackmagic SmartScope Duo 4k |
| Converter | Teranex AV Standards Converter |
| CG/GFX | vMix 4k with dedicated Key/Fill output for lower thirds etc. Additional HD-SDI Out for Video Payout, Dante® VSC |

STREAMING

| | |
|---------------------|---|
| Encoder | Epiphan Pearl Nano 4k |
| Internet Connection | Swisscom Business Fiber 5G Hot Failover 10 Gbit/s synchronous |
| Guest WiFi | 4G/LTE Hotspot with Gateway 100 Mbit/s down, 20 Mbit/s up |

CAMERAS

| | |
|----------|---|
| Cameras | 4x BirdDog Eyes P100 Remote Camera (more / others on request, additional costs may apply) |
| Optics | 4.7mm - 47mm optical Zoom 1/2.8 CMOS Sensor (others on request, additional costs may apply) |
| Prompter | 2x 21.5" prompter/talent screen (routable) 2x 46" convenience display on low floor stand |



AUDIO

| | |
|-------------|--|
| Audio Mixer | Yamaha QL 1 digital audio desk with Dante® |
| Microphones | 6x MiPro ACT-7 with Bodypack and Lavalier Mic (others on request, additional costs may apply) |
| Monitoring | 2 PGM audio monitor for MCR 2 active audio monitor for audio desk 1 Sennheiser HD6 Mix for operator |
| Reference | RTW TM3-SDI Level Meter (EBU128) |
| IFB | MiPro 1-Channel IFB System with 2 Bodypacks |
| Intercom | ClearCom MMX24 6 intercom stations in the control room 2 camera intercom (integrated) for BMD URSA 1 Wireless Partyline with 3 Bodypacks IFB for talents, zoom and studio |

LIGHTING

| | | |
|--------------|--------|---|
| Fresnel | 4 6 | Lupo Dayled 650 Dual Color Lupo Dayled 1000 Dual Color P.O. |
| Panel Lights | 4 3 | Lupo Superpanel 60 Soft Dual Color P.O. Lupo Superpanel 30 Dual Color P.O. |
| Control | 1 | Zero 88 FLX S24 1U |

(more / others on request)

FACILITY

| | |
|---------------------|---|
| Production Area | approx. 50 m2 with wooden flooring and standard printed backdrop (other flooring on request - additional costs will apply) |
| Master Control Room | Image Technology Remote Session Operator Producer Technical Director / Vision Mix CG / Video Operator Audio Operator |
| Adjoining Rooms | Small Lounge with Coffee Kitchen Toilet / Bathroom Work Counter Work Area |
| Capacity | maximum of 15 pax incl. talents and crew. |



FURNITURE

We have a small assortment of furniture available in our warehouse. A basic set of 4 arm chairs and small coffee table is already on-site. If you have special requirements, please let us know - we're happy to help you with organising appropriate furniture for your event.

CATERING

Multiple options are available. Please find below a selection we used for several productions in our studio ... all of them are tasty ;-)

| | |
|------------------|---|
| Thai | https://www.boobasel.com |
| Pizza | https://www.stripped-pizza.com |
| Italian | https://www.pellicano1981.com/catering |
| Fine Finger Food | https://www.weber-beck.ch/ |

PUBLIC TRANSPORT

| | | |
|-------------------------------|--------------------------------------|----------------------------------|
| Tram Stop "St. Jakob" | Tram Line 14 Bus Line 36/37/47 | ~ 7 min. walking distance (600m) |
| Tram Stop "Dreisplatz" | Tram Line 10/11 Bus Line 36/37/47 | ~ 9 min walking distance (700m) |
| Railroad Station "Dreisplatz" | Train S3 | ~ 8 min. walking distance (650m) |

PARKING SPACES

We can offer up to 2 parking spaces directly in front of our studio. Depending on the time quite a lot of parking lots are available in the "blue zone" - which allows parking up to 90 min. free of charge. Parking tickets for half- or full days are available on every ticket machine of the public transport. The full day ticket (valid for all blue zones in Basel) is priced at 20 CHF.

You can also book your parking ticket online in advance or use the parking app. Please use this link for more information

<https://www.polizei.bs.ch/verkehr/strassenverkehr/parkieren/besucherparkkarte.html>
(Information also in English, booking form only in German)

If you use the parking app "ParkSmart Basel", you will get the first 10 tickets per year (full- or half-day visitors tickets) with 50% off.

<https://www.polizei.bs.ch/verkehr/strassenverkehr/parkieren/parksmart-basel.html>



ACCOMODATION

| | | |
|---|---|----------------------------------|
| <u>B&B Auf dem Wolf - St. Jakob</u> | - | ~ 2 min. walking distance (130m) |
| <u>Novotel Basel</u> | - | ~ 7 min. with the car (2.5km) |
| <u>Hotel Coop Tagungszentrum</u> | - | ~ 7 min. with the car (2.5km) |

CAR PARK

The car park closest to our studio is "Parkhaus St. Jakob", reachable within ~9 minutes walking distance (750m) .
(<https://www.parkhaeuser.bs.ch/st-jakob/tarife-zahlungsmoeglichkeiten.html>).

EQUIPMENT / FURNITURE DELIVERY

The door size is 200 x 85 cm at the back of the building and ground level with small steps. Access is possible with small trucks but needs to be coordinated with the neighbourhood.

OTHERS

Coffee, tea and softdrinks (as well as likely some sweets - but no promise, our boss loves sweets...) are usually available during production and are included in the studio rental fee.

CONTACT

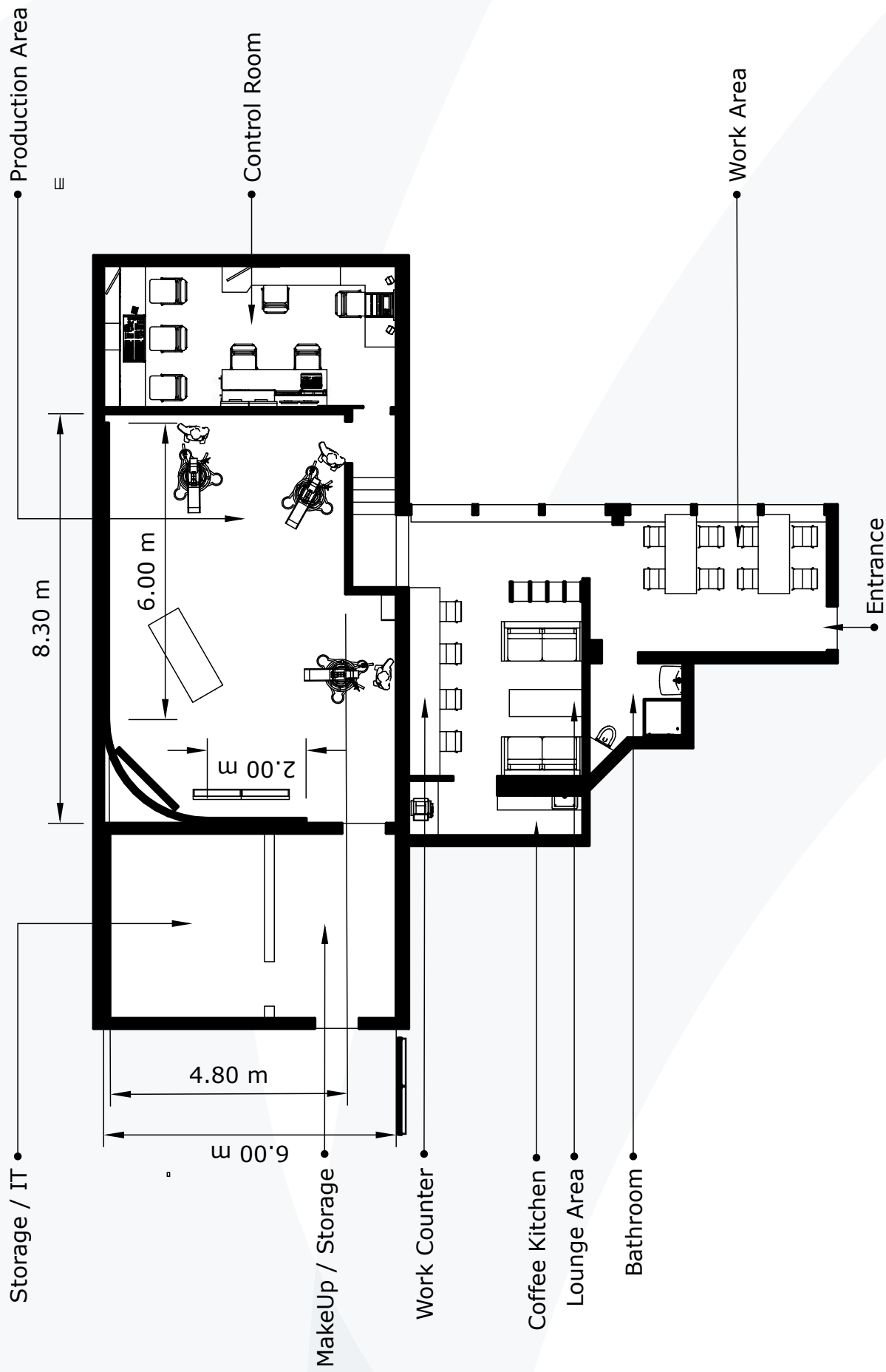
Nominari Schweiz GmbH
Studio "Auf dem Wolf"

Auf dem Wolf 28
4052 Basel
Switzerland

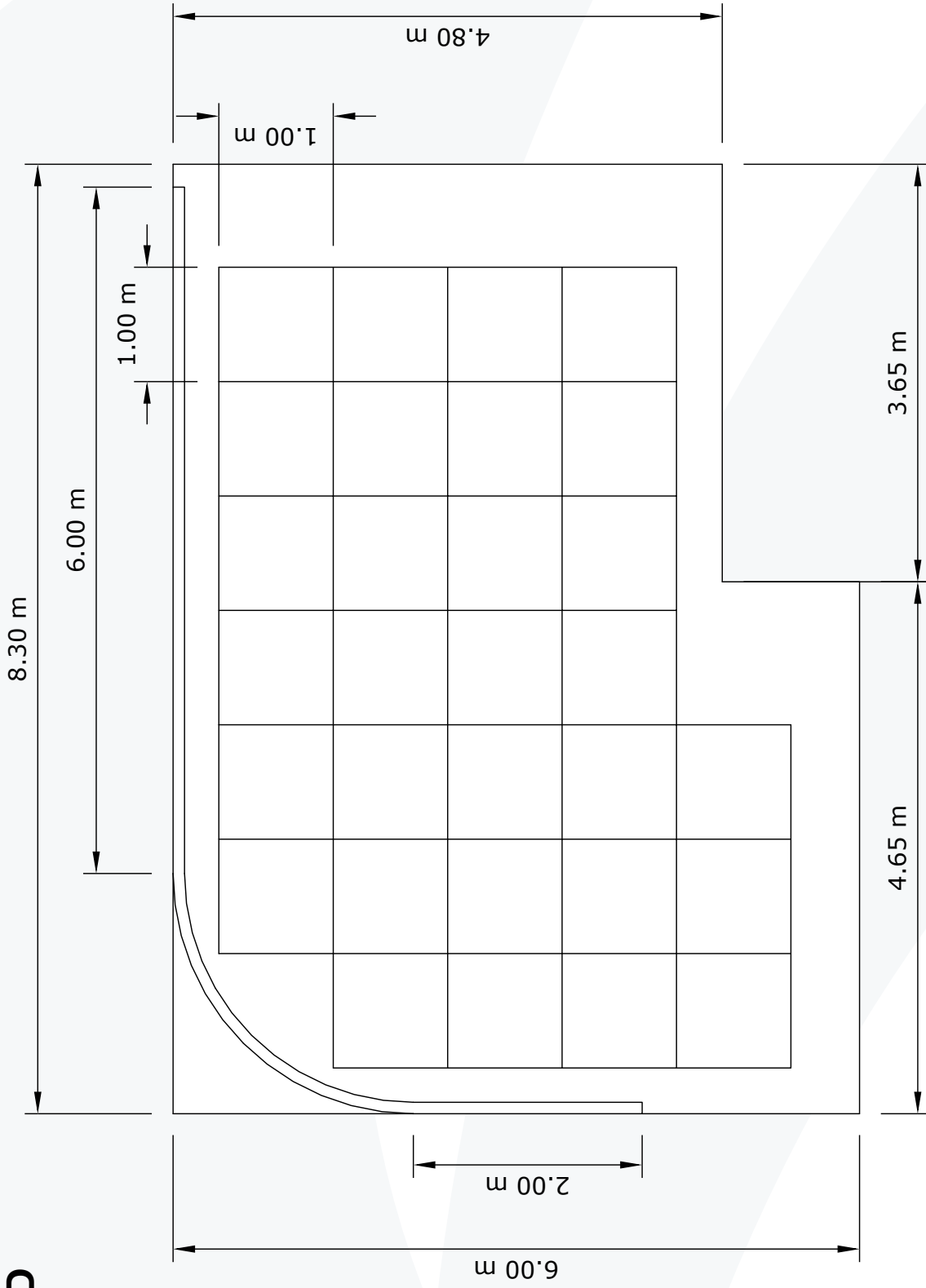
+41 61 312 34 34
booking@webcaststudio.ch



FLOORPLAN



LIGHTGRID



Our light rig is made from standard 50mm aluminium pipes.



SITUATION

